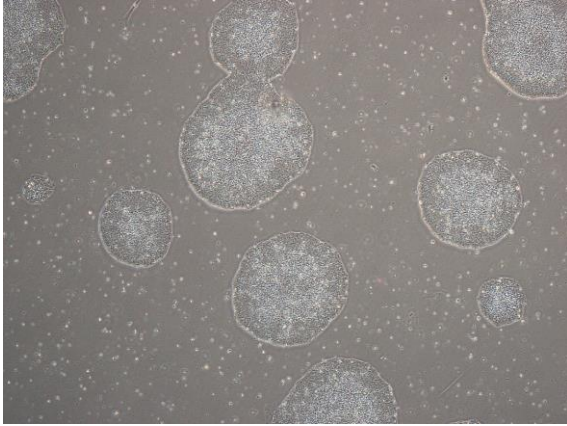
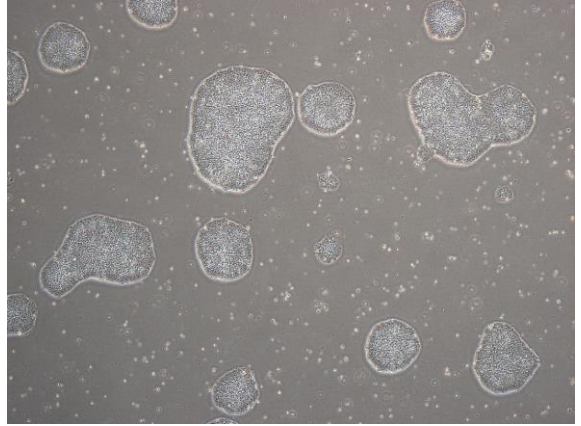


## 【 CiRA-j-1064 】 Morphology of iPSC colonies

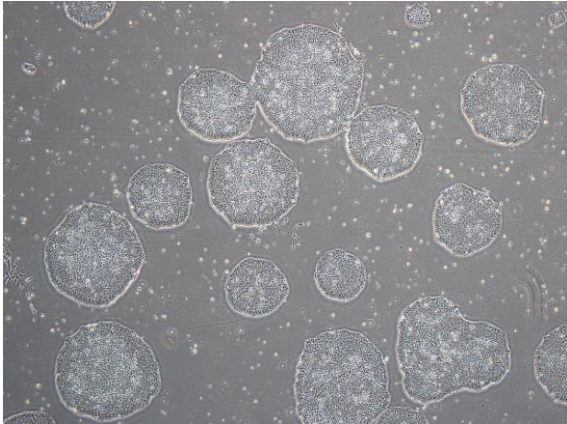
CiRA-j-1064-A: passage-2



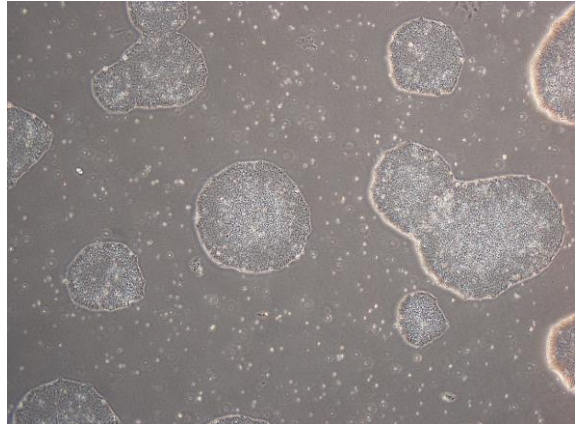
CiRA-j-1064-B: passage-2



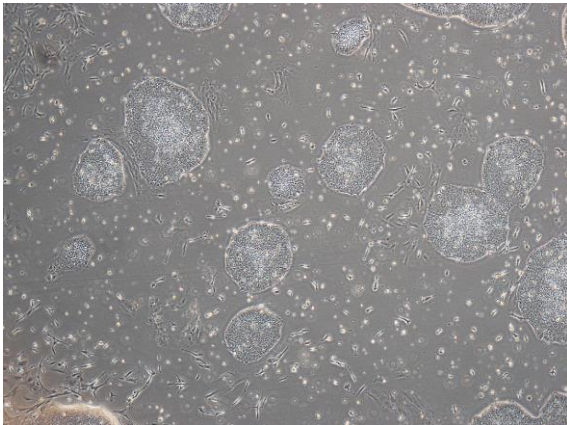
CiRA-j-1064-C: passage-2



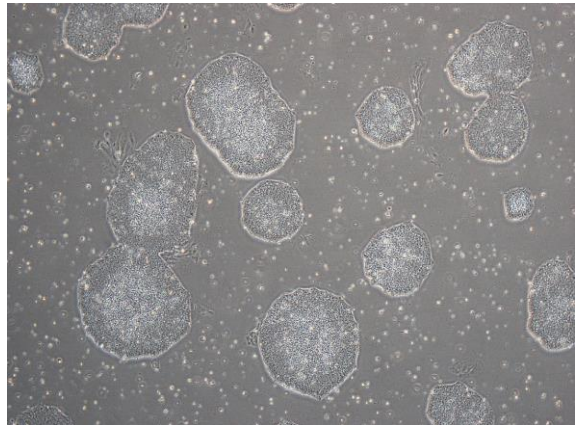
CiRA-j-1064-D: passage-2



CiRA-j-1064-E: passage-2



CiRA-j-1064-F: passage-2



( All images were captured at 4x magnification )